



Global Wall Panel Group

Efficiency Leap in Façade and Steel Engineering – Powered by HiCAD

Global Wall Panel Group, a division of Global Roofing Inc., specializes in advanced façade and steel structure solutions. In 2024, the company began a digital transformation journey that redefined how it delivers complex building-envelope systems—driven by precision, speed, and innovation.

Initially, the team wasn't actively searching for a new CAD system, but HiCAD quickly revealed its potential to deliver a real efficiency leap across design, documentation, and fabrication.

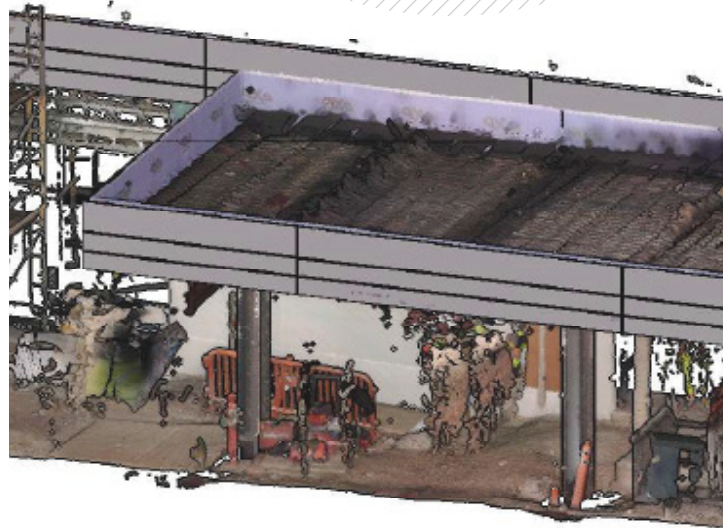


Image: © Global Wall Panel Group



REFERENCE

Breaking Down Silos: From Fragmented Tools to Unified Design

„Multiple software platforms slowed us down and created discontinuity in our workflows.“

Before HiCAD, the company relied on AutoCAD, Inventor, and Revit. While AutoCAD, Inventor, and Revit were functional, they lacked unified standards and created inefficiencies across departments

As the company expanded its offerings, a more integrated, streamlined solution became critical. HiCAD's tailored modules including, **automated BOMs (bills of materials), parametric shop drawings, and point-cloud integration** proved to be the perfect fit.

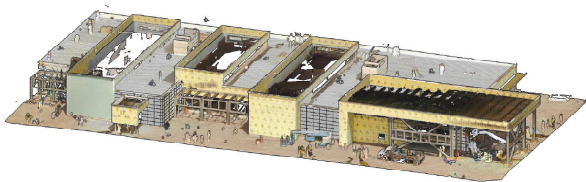


Image: © Global Wall Panel Group

Why HiCAD Was the Clear Choice

“HiCAD solved challenges we'd been dealing with for years—it was an easy decision.”

After a focused ROI presentation highlighting HiCAD's efficiency and automation capabilities, the leadership team, including the CEO, approved full implementation. Within six months, the team completed customized training across all modules, achieving rapid adoption and tangible results.

The implementation went smoothly. While there was a learning curve, six months of **individualized** training ensured the team mastered all purchased modules. Staff adoption was high, with excitement about **sol-ving** long-standing workflow issues.

HiCAD in Action: From Design to Fabrication

“The Element Installation **module** quickly became our go-to feature.”

HiCAD is now central to operations, powering modules such as Element Installation, Steel Engineering, Point Cloud, and Sheet Metal.

Teams can:

- Automate fabrication documentation
- Generate 3D details and models directly from point clouds
- Maintain 2D/3D continuity across all documentation
- Increase accuracy, efficiency, and trust throughout the organization.

The software has transformed **productivity**, allowing faster project delivery and higher-quality outcomes.

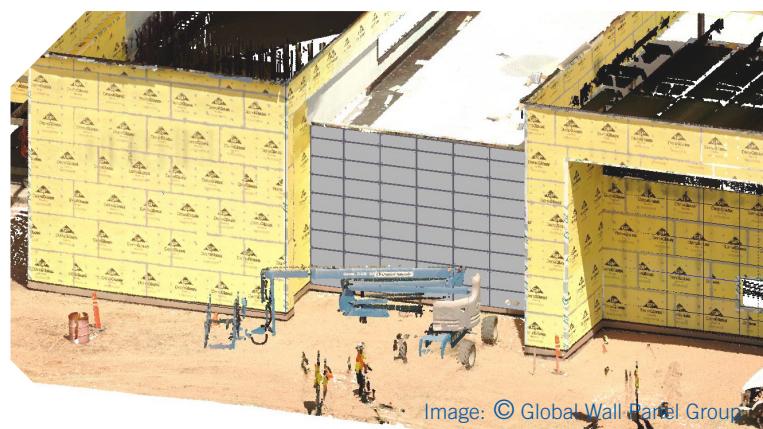
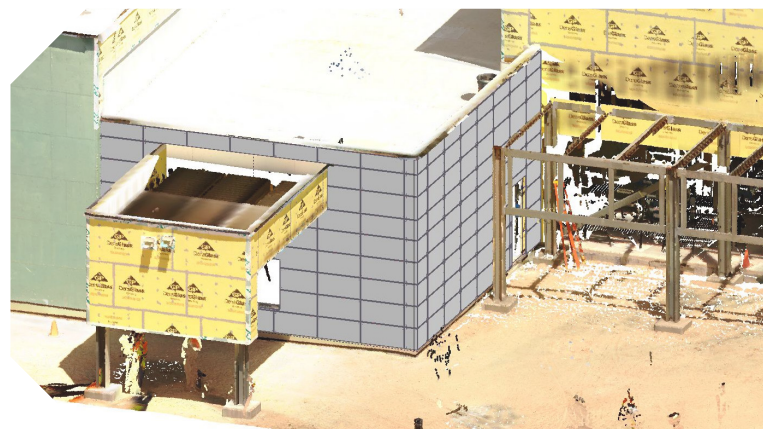


Image: © Global Wall Panel Group

Real-World Results: Complex Façade Fabrication Made Simple

“The customer was impressed with how we scanned and fabricated with such precision.”

One of the first major projects combined 3D scanning and HiCAD to fabricate a **multicolored, nonstandard-geometry** façade. HiCAD handled the majority of panel fabrication, enabling

- **Increased fabrication output**
- **Time savings on-site due to precise 3D panel layouts**
- **Improved accuracy and quality**

The project also allowed the team to refine internal workflows and increase overall efficiency—demonstrating HiCAD’s power from design through installation.

Concierge-Level Support from ISD Group

“ISD provides concierge-level support—their expertise is unmatched.”

Support from ISD was critical to success. Requests are resolved almost immediately, and training is tailored to each team’s pace and goals. The partnership is viewed as a key component of successful HiCAD adoption, allowing the company to fully leverage the software’s capabilities.

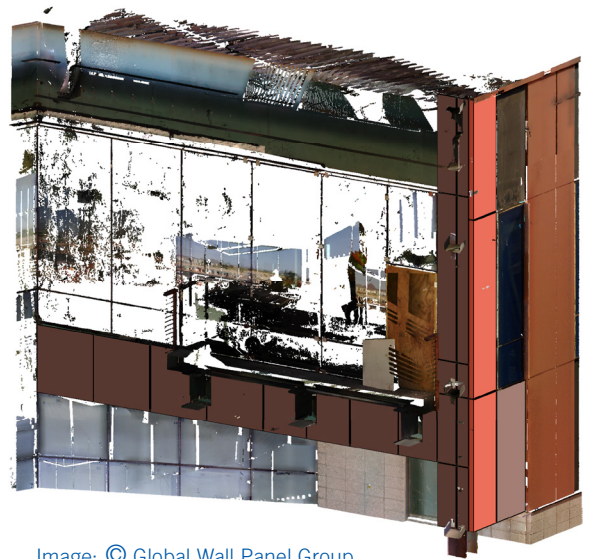


Image: © Global Wall Panel Group



Image: © Global Wall Panel Group

“If your team handles complex façades or steel structures, HiCAD is a game-changer. It rewards teams that embrace efficiency - the gains are enormous.”

Global Wall Panel Group

Efficiency, Accuracy, and Trust

“We’ve gone from 25% time savings to **50–65%**, and it keeps improving.”

HiCAD has delivered measurable improvements:

- Time savings across design and fabrication
- Increased accuracy through point-cloud integration
- Enhanced team trust and accountability
- Streamlined production workflows from design to installation

A standout project involved designing and installing elevator-lobby panels, where field crews could immediately see the efficiency and clarity HiCAD provides, **which improved** understanding and execution.

Results & Conclusion

HiCAD has transformed how Global Wall Panel Group delivers complex façades and steel structures, combining precision, speed, and collaboration at every stage. The software has become a daily partner in driving efficiency, quality, and innovation across the organization.

Results at a Glance:

- 50–65% time savings in design and fabrication
- Automated BOMs and shop drawings
- Enhanced accuracy and trust through 3D point-cloud integration
- Streamlined design-to-installation process

From design to fabrication, HiCAD continues to elevate Global Wall Panel Group’s ability to deliver industry-leading façade and steel solutions with measurable results and lasting impact.

In Brief:

- > Global Wall Panel Group
- > Software: HiCAD
- > ryan.diamond@global.inc
- > www.global.inc

Image: © Global Wall Panel Group



Your strong partner for your success!

See for yourself what our solutions can do. We would be delighted to show you the advantages of our software solutions in a personal presentation. Contact us to arrange an individual appointment – we are looking forward to meeting you!

ISD Group USA Inc.

Phone: +1-704-519-2498

E-mail: info@isdgroup.us

Web: www.isdgroup.us

